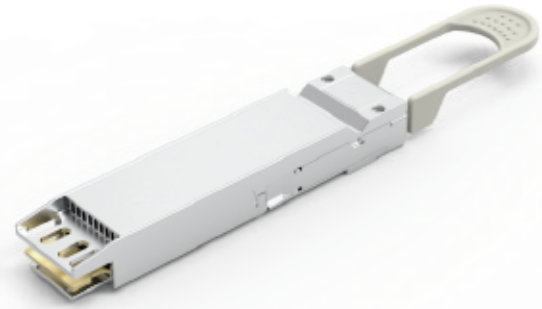


## E-OSFP(800G) Loopback

### OVERVIEW



OSFP passive loopback module is used for testing OSFP transceiver ports under board level tests. This module is packaged in standard MSA housing compatible with all OSFP ports. Transmit data from the host and back to the host within this module, it provides an efficient way to verify OSFP ports during R&D test, production testing and field testing. The module provides programmable power dissipation up to 23.5W allowing the module to emulate all the OSFP power classes. It also provides voltage sense, insertion counter, power staging, LED blinking rate, over temperature cut off and temperature sensors.

### FEATURES & BENEFITS

- 3.3V voltage supply
- Supports 8X28G NRZ and 8X56G PAM4 and 8X112G PAM4 electrical interface
- Loops back TX to RX on all 8 ports
- I2C interface & MSA compatible & Custom memory maps
- 8 independent power heaters, with 0.5W solution up to 23.5W
- 4 Thermistors on PCBA (Optional on the shell)
- Hot-pluggable module
- 2 status LED indicator
- Temperature monitor and alarms warning
- Low speed signal control
- Voltage monitoring

### PRODUCT APPLICATIONS

Server test  
HPC test  
Router/Switch test

### INDUSTRY STANDARDS

SFF-8636  
IEEE802.3cd/ck  
QSFP-DD Common Management Interface Specification Rev 4.0

## TECHNICAL INFORMATION

### MATERIAL

Contact gold plated 30u"  
Nickel plated zinc die cast shells & latching  
Mechanism parts  
Thermoplastic cable pull tab

### ELECTRICAL PERFORMANCE

Differential impedance: 100 ohm  
Current : 0.5 A/contact  
Voltage: 3.3 V AC/contact

### SPECIFICATION

OSFP MSA  
CMIS3.0/4.0

### ENVIRONMENTAL

Operating Temperature: -20°C to +105°C  
RoHS2.0 compliant

### MECHANICAL PERFORMANCE

Rated Durability Cycles 250  
Latch Pull Strength 90N  
Cable Retention in Cage 125N

### Partial PN Table

PN	Description
LA0SQ201-SD-R	E-OSFP 112G Loopback 20W Module