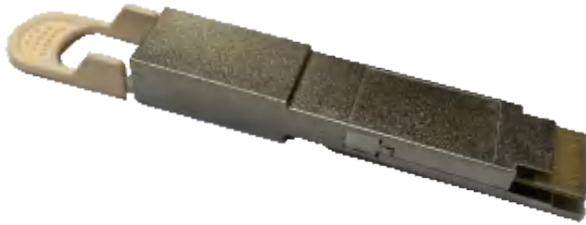


Super QSFP-DD SR8 200G Optical Transceiver



OVERVIEW

Luxshare-TECH 200Gbps S-QSFP-DD optical transceiver is designed for 200Gbps Ethernet links with short-reach communication. The link distance up to 70m and 100m over OM3 and OM4 respectively. It integrates eight data lanes in each direction with each lane operating at 25.78125Gbps and 10.3125 Gbps. This transceiver also can be used for high density 200G/80G Ethernet applications. They are compliant to IEEE802.3bm 100GBASE-SR4 and break-out 4x25 GBASE-SR and QSFP-DD MSA.

This transceiver utilizes 850nm VCSEL and PIN detect to provide the reliable long life, good performance and quality.

FEATURES & BENEFITS

- ◆ Hot Pluggable QSFP-DD form factor
- ◆ Supports auto-rate detection for both 25.78125Gbps and 10.3125Gbps operation
- ◆ Low Power Dissipation, MAX 3.5W Each End
- ◆ Up to 70m transmission with OM3 multimode fiber and 100m transmission with OM4 multimode fiber.
- ◆ 850nm VCSEL/PIN photo detector
- ◆ Operating Case Temperature: 0°C to +70°C/-5°C to +85°C

PRODUCT APPLICATIONS

Ethernet for 2x 40G/100GBASE-SR4
HPC Interconnects
Proprietary Interconnections

Super QSFP-DD SR8 200G Optical Transceiver

TECHNICAL INFORMATION

MATERIAL

Nickel plated zinc die cast shells & latching
Mechanism parts
Thermoplastic cable pull tab
Optical plastic lens

ELECTRICAL PERFORMANCE

Power Supply Voltage: 3.3V (3.14 to 3.46V)
Data rate per lane: 25.78125Gbps
Power Consumption: 4W(MAX)
Transmitter Type: VCSEL
Receiver Type: PIN

SPECIFICATIONS

Compliant to QSFP-DD Rev 3.0
SFF-8636 Management Interface
SFF-8679: General Electrical
Compliant to Class 1M Laser Safety
IEEE 802.3bm: Physical Layer Specifications and Management Parameters
ROHS-6: Environment Safety
ES-12-00-0027

Partial PN Table

PN	Package	Description	Reach	Protocol Support	Data Rate	Temp	Power Consumption	Optical Connector	Transceiver	Receiver	WaveLength
PA02QMA01-SD-R	S-QSFP-DD	SR8	70m(OM3)/ 100m(OM4)	Ethernet	200Gbps	0-70°C	3.5W	MPO	VCSEL	PIN	850nm
PA02QMA0E-SD-R	S-QSFP-DD	SR8	70m(OM3)/ 100m(OM4)	Ethernet	200Gbps	-5-85°C	3.5W	MPO	VCSEL	PIN	850nm

MECHANICAL PERFORMANCE

QSFP Module Insertion: 40N(MAX)
QSFP Module Extraction: 30N(MAX)
QSFP Module Retention: 90N(MIN)
Insertion and removal cycles: 50Cycles

ENVIRONMENTAL

Storage Temperature Range: -40°C to +85°C
Operating Temperature Range: 0°C to 70°C / -5°C to +85°C
Relative Humidity: 0 to 85%