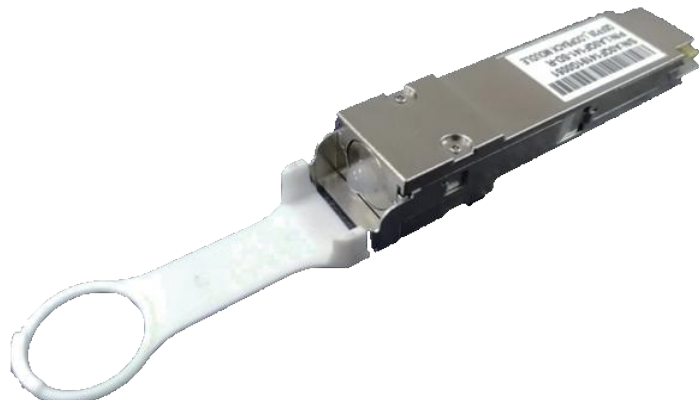


## Super QSFP(100G) Loopback



### OVERVIEW

Luxshare-TECH's Super QSFP(100G) passive electrical loopback module is used for high speed testing application for QSFP host ports. The Super QSFP loopback is designed for 100Gigabit Ethernet applications, which the loopback provides 4x28Gbps RX and TX lanes, I2C module management interface and all the QSFP SFF hardware signals. This Loopback module loops back 4-lane 28Gb/s transmit data from the Host back to 4-lane 28Gb/s receive data port to the Host, it provides an efficient way to verify QSFP ports during R&Dtest, production testing and field testing.

Luxshare-TECH Super QSFP 100G Loopback provides programmable power dissipation up to 6W allowing the module to emulate all the QSFP28 power classes. It also provides a voltage sense, an insertion counter, a power staging, a LED blinking rate, an upper temperature cut off and 4 temperature sensors.

### FEATURES & BENEFITS

- ◆ High speed signals Loopback: TX are electrically looped back to RX per lane with attenuation options at 28Gbps/lane
- ◆ Data communication interface: The Loopback Module supports the same I2C interface as optical module
- ◆ LED indicator: A dual-color LED shows low/high power mode status and I2C enable/disable status
- ◆ Power control: Power dissipation could be controlled by I2C artificially, Range 0-6W(Q), resolution is 0.2W
- ◆ Temperature monitor: 2 sensors on PCBA, another two closed to shell. Temp data could be read by I2C
- ◆ Cut-off temperature : A Cut-off temperature is pre-defined by register. Avoiding the overheating.
- ◆ Insertion counter: Insertion action could be counted and it is nonvolatile
- ◆ Voltage monitoring: Vcc could be detected. Range 0~3600mV, Resolution 0.1mV
- ◆ Device information read /write access right: System ID, Revision, Module dynamic info. Password entry etc
- ◆ Low speed signal : Modsel, Reset, Lpmode, Modprsl, IntL, SCL&SDA etc
- ◆ Visual software interface: Intelligent user interface available

### PRODUCT APPLICATIONS

Server test  
Network Storage  
test  
HPC test  
Router/Switch test

### INDUSTRY STANDARDS

SFF 8636  
SFF 8679  
IEEE802.3bj

# Super QSFP(100G) Loopback

## TECHNICAL INFORMATION

### MATERIAL

Contact gold plated 30u"  
Nickel plated zinc die cast shells & latching  
Mechanism parts  
Thermoplastic cable pull tab

### ELECTRICAL PERFORMANCE

Differential impedance: 100 ohm  
Current : 0.5 A/contact  
Voltage: 30 V AC/contact

### Partial PN Table

Product Numbers	Product Description
LA0QF139-SD-R	Super QSFP Loopback-5dB
LA0QF141-SD-R	Super QSFP Loopback-0dB

### MECHANICAL PERFORMANCE

Rated Durability Cycles 250  
Latch Pull Strength 90N Min  
Cable Retention in Plug 90N Min

### ENVIRONMENTAL

Operating temperature range: 0°C to +80°C  
RoHS compliant

### SPECIFICATION

ES-10-00-0025