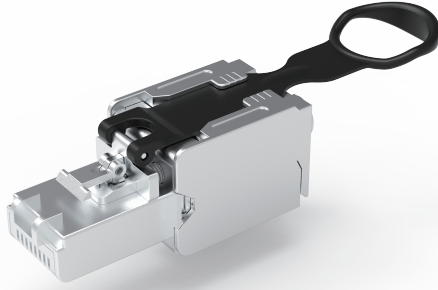


RJ Signal Connector



OVERVIEW

Luxshare-TECH RJ signal connector is the product for next generation small edge computing, IOT and small switch. It could be assembled on the spot easily. Transmission characteristics (category) is CAT6A. This solution support cable assemble on site, 8 pin with colors and figures mark easy to operate cable assembly have suspension link release the lock.

FEATURES & BENEFITS

- ◆ Connection method is IDC
- ◆ Cable Feed is Straight, content reconnect ability, Full EMI shielding, Locking, Latch
- ◆ Connection cross section AWG to 23 -24 AWG(solid/stranded)
- ◆ MAX cable diameter from 5 mm to 9 mm
- ◆ External cable diameter from 5 mm to 9 mm

PRODUCT APPLICATIONS

Data center & Networking Equipment
Switches/Routers
Baseband Commercial Systems
Networking Radio Units

INDUSTRY STANDARDS

Design by Luxshare-TECH
IEEE802.3

RJ Signal Connector

TECHNICAL INFORMATION

MATERIAL

Plastics: Thermoplastic, UL94V-0
Terminal: Copper alloy, gold plated on contact area over nickel
IDC Terminal: Copper alloy, Tin plated over nickel
Shells: Zinc alloy, Nickel Plated

ELECTRICAL PERFORMANCE

Voltage: 50V DC MAX
Current: 1.5A MAX

ENVIRONMENTAL

Operating temperature : -40°C TO +85°C
Storage temp range in packed condition: -25°C TO +55°C

Partial PN Table

Product Numbers	Product Description
RG2T0Z-Z6B3-KZ1-3R	RJ45 Field Termination 10G PLUG Connector

MECHANICAL PERFORMANCE

Rated Durability Cycles 200
Mating force: 20N MAX
Un-mating force: 20N MIN

PACKAGING

PE Bag