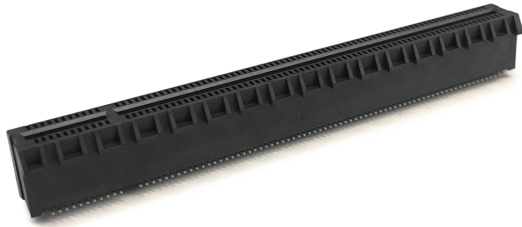


PCIe4.0 Card Edge Connector



OVERVIEW

Luxshare-TECH's PCIe Gen 4 card edge connectors meet industry PCI-SIG CEM 4.0 and support data rate up to 16 GT/s. Designed to support better system application extension and higher speed in servers, storage and workstations. Its pitch is 1.0mm, designed for supporting 2.5GT/s (Gen 1), 5.0GT/s (Gen 2), 8.0GT/s (Gen 3) and upgrade to 16GT/s (Gen 4). And the connectors' footprint and mating interface are backward compatible with each PCIe generation.

FEATURES & BENEFITS

- ◆ Available in x16 (164 positions),SMT type
- ◆ 1.00 mm pitch, supports 16 GT/s (Gen 4), 8.0 GT/s (Gen 3), 5.0 GT/s (Gen 2), and 2.5 GT/s (Gen 1)
- ◆ Footprint and mating interface backward-compatible with each generation

PRODUCT APPLICATIONS

Networking Equipment
Servers
Storage
Edge computing device
AI computing architecture

INDUSTRY STANDARDS

PCIe 4.0
PCIe3.0

PCIe4.0 Card Edge Connector

TECHNICAL INFORMATION

MATERIAL

Terminal: Copper Alloy
Contact Area Finish: Gold over Nickel
Solder Area Finish: Tin over Nickel
Board lock: Stainless steel, plated tin over nickel
Housing: High temperature thermoplastic(UL 94V-0)

ELECTRICAL PERFORMANCE

Voltage: 12V
Current: 1.1A MAX per contact

ENVIRONMENTAL

Operating temperature : -55°C TO +105°C
Storage temperature : -20°C TO +70°C

Partial PN Table

| Product Numbers | Product Description |
|--------------------|--|
| PIEBA6-5300-000-1H | PCIE 4.0 Vertical Receptacle 164PIN SMT TYPE |

MECHANICAL PERFORMANCE

Rated Durability Cycles: 50
Mating Force: 0.58N /pin MAX
Unmating Force: 0.075N /pin MIN

PACKAGING

Tray

SPECIFICATION

ES-11-00-0022